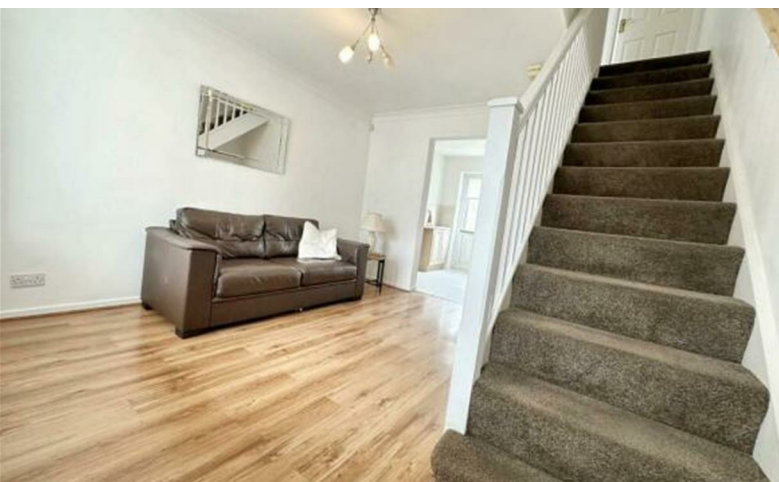


# GILMORE ESTATES

Property Sales & Lettings



£725

, Hunter's Court, , Wallsend, , NE28 7NZ

# 17 Hunter's Court, Wallsend, NE28 7NZ

Two bedroom terraced house located in Wallsend. Available immediately for long term rental.

## Lounge

11'7" x 12'5" (3.55 x 3.80)

The lounge is positioned at the front of the property. A door provides access to the kitchen and a carpeted staircase provides access to the first floor accommodation. A double glazed window also looks to the front of the property and a single radiator sits beneath. The room also benefits from wooden laminate flooring.

## Kitchen

7'10" x 11'7" (2.39 x 3.54)

The kitchen benefits from a range of wooden wall and base units with complimentary work-surfaces over-top. An inset sink sits below a double glazed window to the garden and there is room for appliances such as an oven, fridge freezer, dishwasher, and washing machine. A door also provides access to the private rear garden.

## First Floor Landing

## Bedroom One

8'4" x 12'1" (2.56 x 3.69)

The master bedroom is situated to the front of the property with room for a large bed wardrobes with an additional storage cupboard. A double glazed window looks to the front of the property and a radiator sits beneath. The room also benefits from wooden laminate flooring.

## Bedroom Two

5'5" x 6'6".200'1" (1.67 x 2..61)

The second bedroom is situated to the rear of the property. A double glazed window looks to the rear garden and a single radiator sits beneath. The room also benefits from carpet underfoot.

## Bathroom

4'9" x 5'9" (1.47 x 1.76)

The bathroom consists of a three piece suite comprising of a paneled bath with shower overhead, a wash hand basin and low level WC. A double glazed window looks to the rear and the room also benefits from tile flooring.

## Garden

Gravelled rear garden.

## Credit References and Deposit

Prospective tenants will be required to complete a credit referencing application payable whether successful or not. Prior to taking occupation of the property you will be required to pay a deposit of 1½ times the monthly rent, the first months rent in advance and an administration fee.

## Directions

